

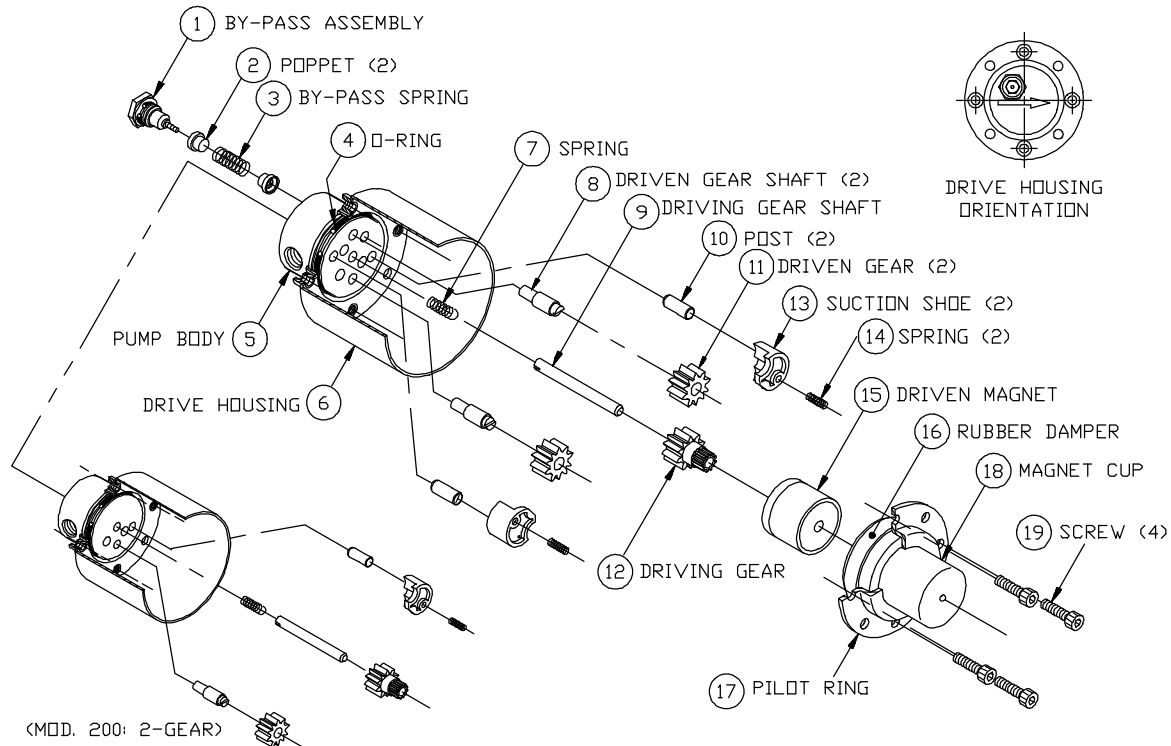


PART NUMBER: 5832

SERVICE INSTRUCTIONS:

MOD: 200/201

REVISION			
LTR.	DESCRIPTION	DATE	BY
D	REVISED PER ECN-4933	11/30/99	JW

**GENERAL:**

1. All service work should be performed in a clean area.
2. Care should be taken to avoid scratching any sealing surfaces or allowing material chips to come in contact with the Driven Magnet Assembly.
3. An even, light coat of high vacuum silicone grease (Dow Corning or equiv.) should be applied to all seals or O-Rings.
4. O-Rings with chamfers should always be installed with the chamfer up, away from the groove.
5. All assembly screws should be tightened evenly and in an alternating pattern.
6. Only Micropump factory authorized replacement parts should be used when servicing any Micropump products.

SPECIFIC:

1. Engage Spring (7) half loop into Drive Gear Shaft (9) slot and rotate Spring/Shaft assembly clockwise while pressing into Pump Body (5) as shown. Firmly seat Spring/Shaft assembly into hole.
2. Orient Driven Gear Shaft(s) (8) to allow the step to engage with Suction Shoe(s) (13) permitting the Suction Shoe to seat flat against the Pump Body (5) face.
3. Complete assembly as shown above.
4. Torque screws (19) to 10 +1/-0 in.-lbs.
5. Gears (11 & 12) and Suction Shoe(s)(13) should always be replaced in matched sets.

MICROPUMP, INC.

A Unit of IDEX Corporation

PO Box 8975, Vancouver, WA 98668-8975 • Phone: 360/253-2008 • Fax: 360/253-8294

MICROPUMP LIMITED

A Subsidiary of Micropump, Inc.

Forge Close, Eaton Socon, St. Neots, Cambridgeshire, PE 19 3TP England, • Phone: (44) (0) 1480-219844 • Fax: (44) (0) 1480-476959

PART NUMBER: 5832

REVISION			
LTR.	DESCRIPTION	DATE	BY
D	REVISED PER ECN-4933	11/30/99	JW

SPARE PARTS LIST

FOR GEAR PUMP MODEL 200/201

PART NO.: 81281/81282

ITEM NO.	PART NO.	DESCRIPTION	UNITS PER ASSEMBLY
1	81277	BYPASS ASSEMBLY	1
2	5666	POPPET, BYPASS	2
3	30061	SPRING, BYPASS	1
4	5575	O-RING, VITON	1
5	5656	BODY, PUMP (MOD. 200 ONLY)	1
5	5658	BODY, PUMP (MOD. 201 ONLY)	1
6	81280	HOUSING ASSEMBLY	1
7	6066	SPRING, LOCKING	1
8	5655	SHAFT, DRIVEN GEAR	1 (MOD.200)
8	5655	SHAFT, DRIVEN GEAR	2 (MOD.201)
9	5652	SHAFT, DRIVING GEAR	1
10	6089	POST, SUCTION SHOE	1 (MOD.200)
10	6089	POST, SUCTION SHOE	2 (MOD.201)
11	30192	* GEAR, DRIVEN	1 (MOD.200)
11	30192	* GEAR, DRIVEN	2 (MOD.201)
12	5664	*GEAR, DRIVING	1 (MOD 200)
13	5682	* SUCTION SHOE	1 (MOD 200)
13	5682	* SUCTION SHOE	2 (MOD.201)
14	5650	SPRING, SUCTION SHOE	1 (MOD 200)
14	5650	SPRING, SUCTION SHOE	2 (MOD.201)
15	81254	MAGNET ASSEMBLY	1
16	5667	DAMPER, RUBBER	1
17	30217	RING, PILOT	1
18	30216	CUP, MAGNET	1
19	5526	SCREW	4
	81287	GEAR SERVICE KIT (MOD. 200 ONLY)	
	81288	GEAR SERVICE KIT (MOD. 201 ONLY)	
		* PARTS AVAILABLE IN GEAR SERVICE KIT ONLY.	

Prices subject to change without notice.

MICROPUMP, INC.

A Unit of IDEX Corporation

PO Box 8975, Vancouver, WA 98668-8975 • Phone: 360/253-2008 • Fax: 360/253-8294

MICROPUMP LIMITED

A Subsidiary of Micropump, Inc.

Forge Close, Eaton Socon, St. Neots, Cambridgeshire, PE 19 3TP England, • Phone: (44) (0) 1480-219844 • Fax: (44) (0) 1480-476959